

How to use the VGHD-CLIPS.exe and the VGUYHD-CLIPS.exe file

In the following tutorial

The word VGHD applies to VGUYHD just the same:

VGHD Clips.exe is a Clip Player. You can Browse the Models Folder, Double Click on a Clip name, and that Clip will play.

When you Double Click, The Clip Player Pushes the Folder Name, and the Clip name to VGHD.exe. VGHD.exe then plays that Clip in Screen Saver or Regular mode based on the .ini file settings. (see below for the .ini file description)

Download the Zip or Rar and extract the files to the “**C:\Program Files\VGHD Player\**” folder ( it could also be any other folder of your choice )

Or you Might have to Download the Two Files Separately:

There will be two files

[VGHD-Clips.exe](#) or [VGUYHD-Clips.exe](#)

[VGHD-Clips.ini](#) or [VGUYHD-Clips.ini](#)

Note: If you Use Both Products VirtuaGirl HD and VirtuaGuy HD ( or all Three including HustlerGirls) you only need on of the Clip Players. They are both the same except for the name. And will Push any \*Clip name to VGHD.exe to play.

**\*Technical info:**

They only work with the Standard VGHD file structure and Clip Names.

If you created your Own Cards with Various Clip names in the Folder, The Clip Player will not work with these type of Folders.

Based on the Clip Name of ‘[annnn](#)-xxxxx.vghd’ the clip player looks for the folder name to match the [annnn](#) part of the clip name.

You can edit the INI file by double clicking on it.

Here is what it contains – three lines

‘Screen Saver Mode 1=yes 0=no followed by time in milliseconds

0

2000

The First line is a comment and must be there.

The Second line is a Zero “0” or a One “1”

Make it a One to have the Clip play as a screen saver. VGHD does not have to be red. In fact it is better to leave it black for Screen Saver mode.

Make it a Zero to have the clip play as a normal VGHD clip, VGHD must be red or Active

The Third Line is the Time in Milliseconds or Thousandths of a Second ( 1000 = 1 second ) to Display the Card Photo before the Clip Plays.

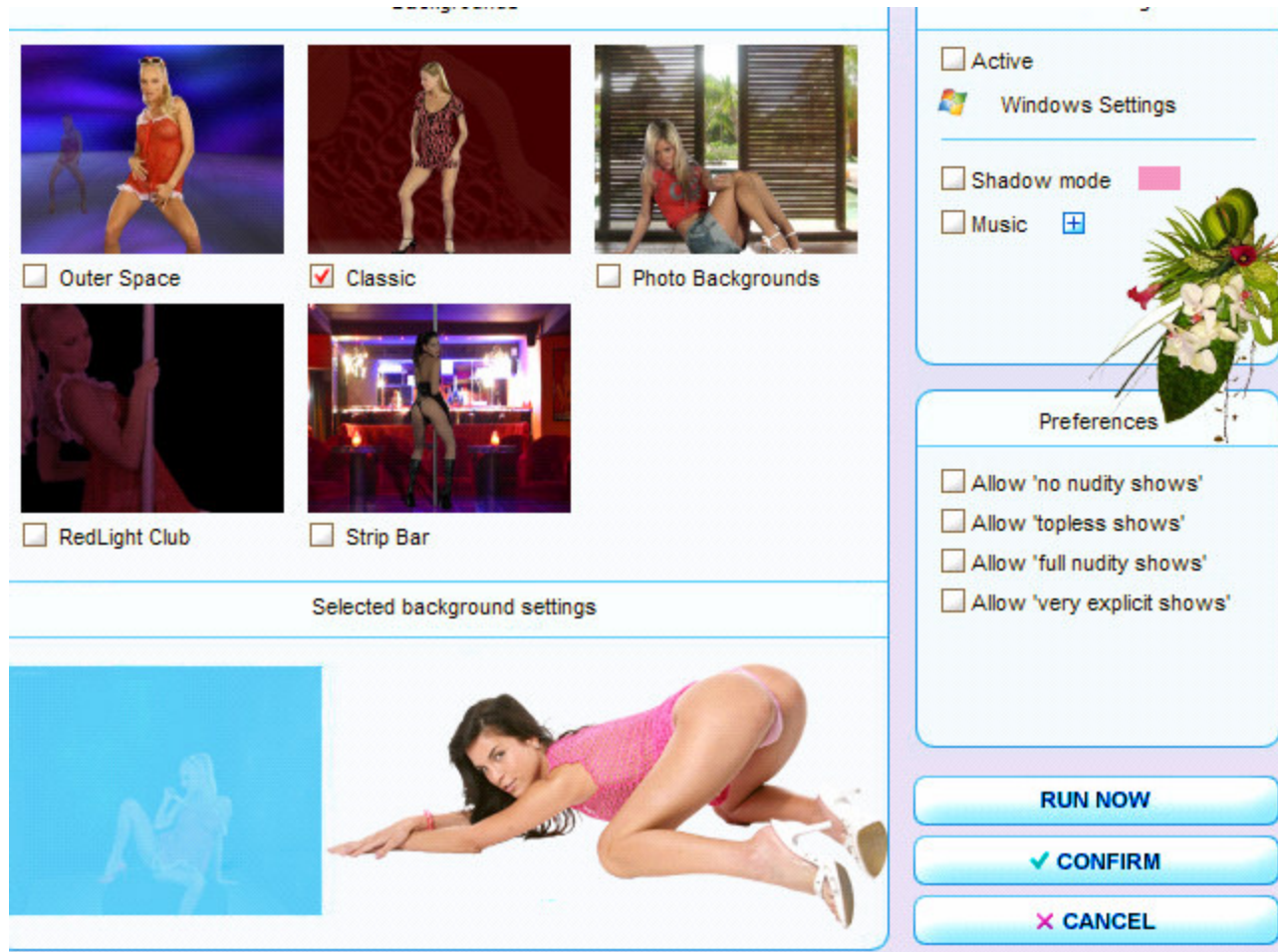
The Card will be displayed in the Upper Left Corner of your Screen.

Use 0 for no Card Display.

That’s all there is to the INI file...

Setting up a screen saver selection

- Note: You must set up a Screen saver selection in VGHD and click on Confirm, prior to using screen saver mode.
- Here I select the Classic Screen saver. I did not check off any other check boxes. Click on Confirm.
- 



File Association:

You Will Have to Manually create the File Association for this to work.  
I could supply Registry Files, but it is simple for you to do.

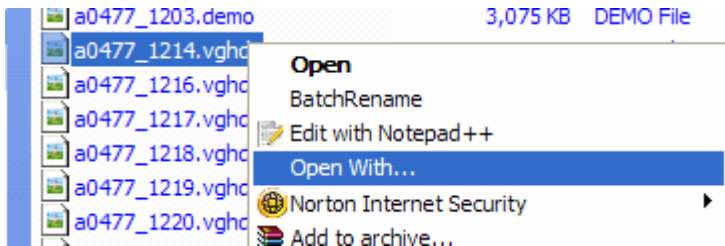
First Browse to the VGHD Models Folder.

Then Brows to one of the Card folders.

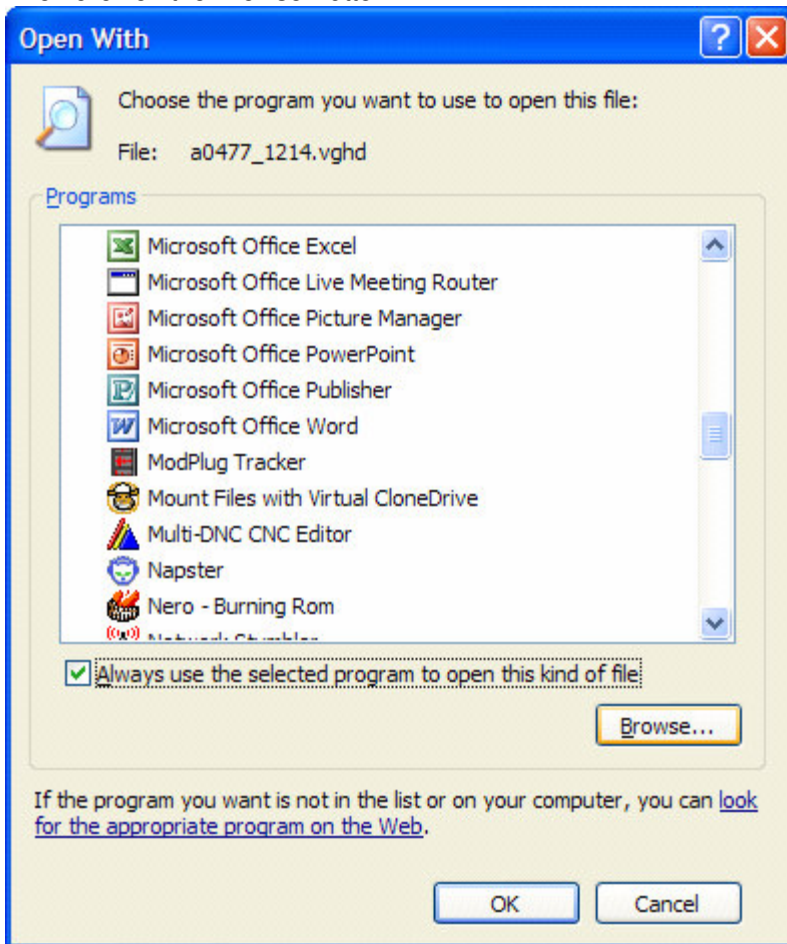
In the Card folder will Be Clips that end in .demo ( trailers ) and .vghd ( bought cards )

Hold Down the SHIFT KEY, while holding the shift key, RIGHT click on a .demo or .vghd file

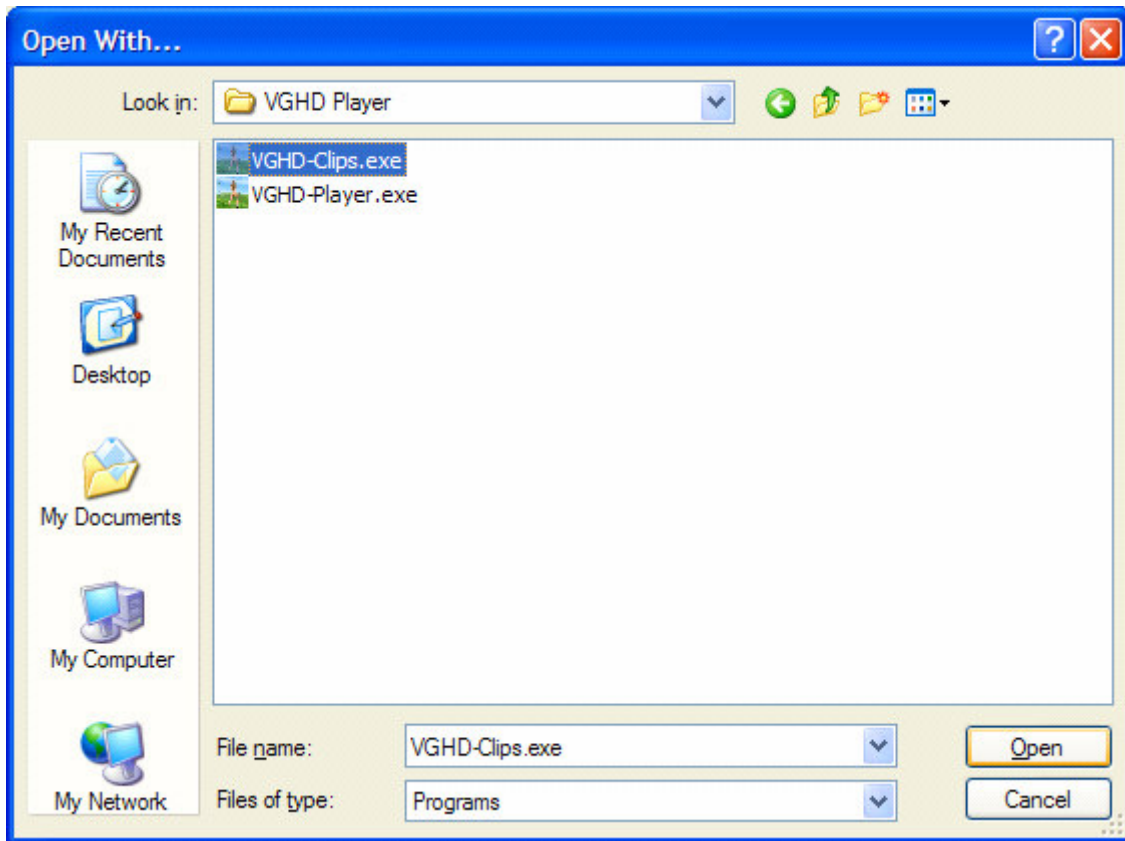
In the Pop up Menu, select open or OPEN WITH...



In the Open With Window, First Check the Always Use the selected Program.. check box  
Then click on the Browse Button

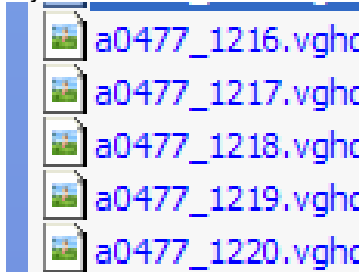


Browse to the Folder where you saved the VGHD Clips.exe program.  
Click on the VGHD-Clips.exe program and then Click on Open



Repeat these steps for the other file type. Either .demo or .vghd

If you did the File association correctly, you will now see the VGHD-Clips icon next to each file.



That's all there is to the Set up...

Now you can browse the Models Folders, double click on a clip, and have it play either as a screen saver or normal VGHD clip.  
( controlled by the INI file.)

For the Normal clip to play VGHD must be active or RED.

I also recommend that you UNCHECK all of your Cards, so that VGHD.exe doesn't start to play Clips on it's own.

When Done Browsing through the Models Folder and playing clips.  
Be Sure to Go back in and Check off the Cards in VGHD and Also check the Nudity Level settings on the Display Tab.